

Creative Secrets of Water

Rhythm and metamorphosis as laws of life



Insights into the work of John Wilkes (1930 – 2011)

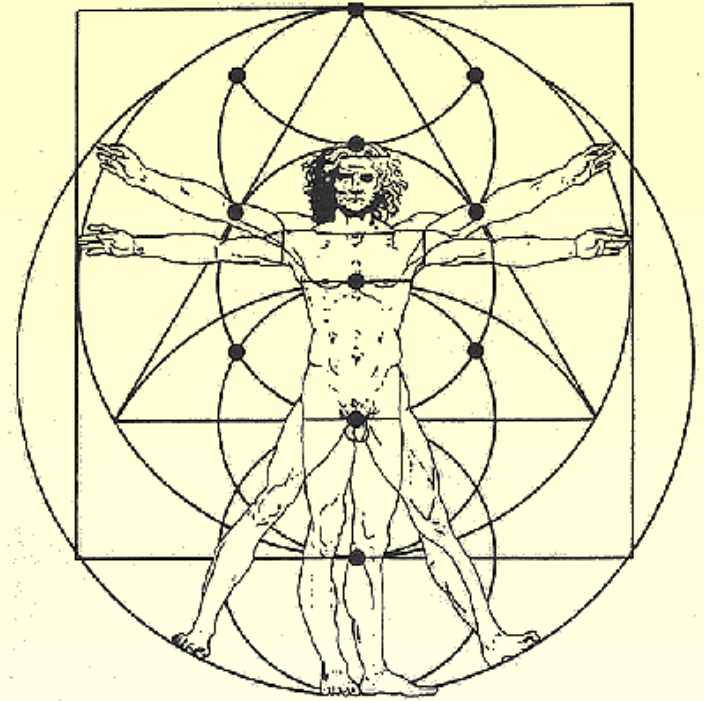


All life is formed through water



Is water the original template of everything alive on the planet?

- Water carries nature's intelligence and has its own nervous system
- Water is an artist creating all living forms through rhythm and metamorphosis within inner skins
- Water carries the metabolism of the world, maintaining all life in nature
- Is physical and energetic, informational and does it have cosmic intelligence as formative light operating through it?



Is water itself the original form
for all physiology?

Water's Metabolic System

Water as powerful sustainer

Temperature of water

- temperature change controls weather
 - affects atmospheric weather
 - affects ocean currents
 - affects coastal weather
- temperatures of water change slower than land
- on freezing water expands, which causes erosion
- also it becomes lighter and floats
 - avoid world being a block of ice

Evaporation

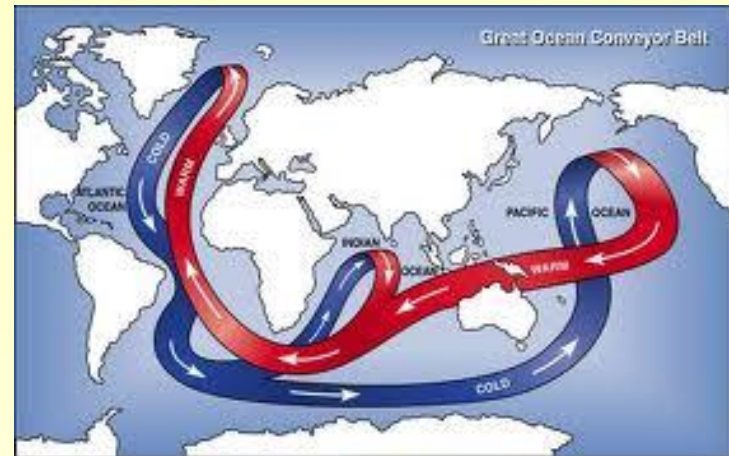
- evaporation power is enormous
 - causes huge storms

Density and Buoyancy

- both higher as a liquid than a solid
 - affects living forms – brain, whale etc
 - very dense with no compression yet liquid

Carrier of nutrients

- dissolves 84 of 103 elements without agitation
- reduces to colloidal form
- carries sustenance into living flora and fauna



Water's Nervous System

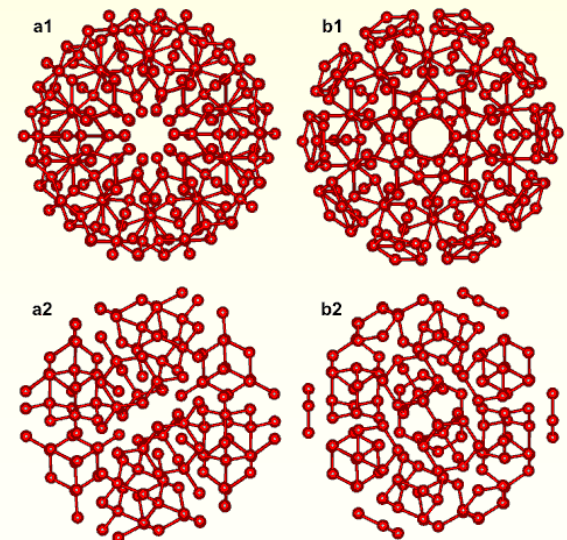
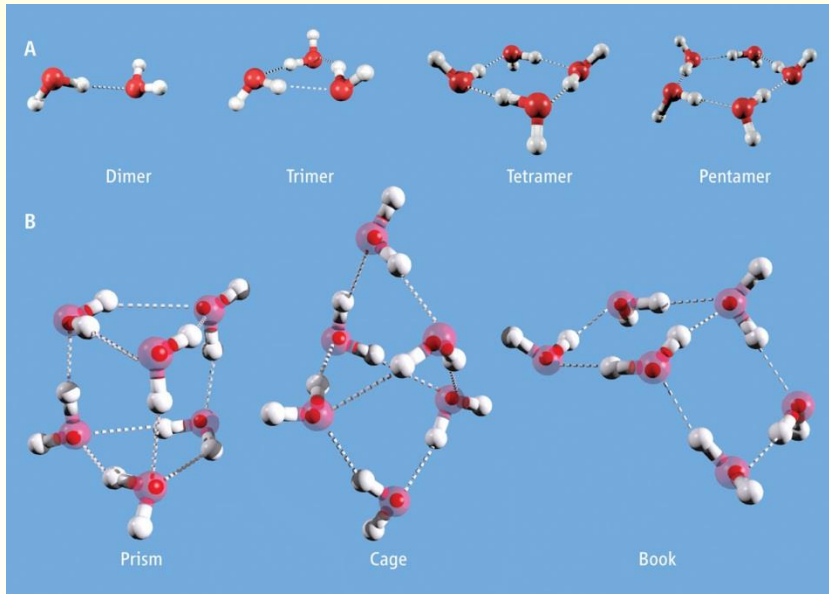
Water as Information Carrier

Capacity of water to hold information in form of frequencies

Cluster structure and vast information exchange

Life, Time, Energy, Frequencies, Movement, Freshness

Translucent – light passing through it



Water's Rhythmic System

'Water' as Artist of Nature

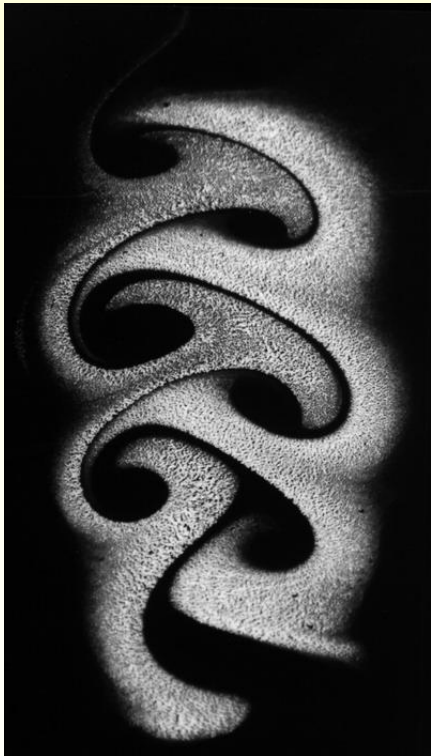
Molecular tension makes possible plants above 60cm

Sensitivity of internal sheaths moving independently

Naturally rhythmical when stimuli are limited

- enables creation of all living forms
- maintains life

This happens only when the water is dynamic and fresh



John Wilkes' primary contribution



Water's essential shape
is a sphere, a water drop



Understanding water's rhythmical character
which enables creativity in nature



By observing water's form and behaviour it is possible to have insights into its formative capacities

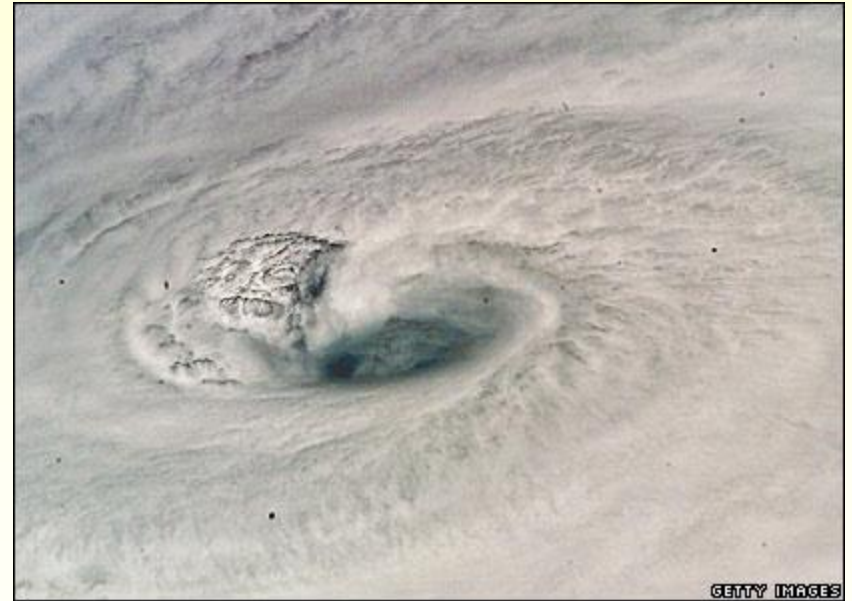
Water forms spheres





When water moves, it moves within the form of sphere and circle and builds rhythms through resistance and forward motion

The spiral vortex makes a cone of air



Hurricane Dean 2007



Monticello dam

In low gradients water can meander more, through rounded flow paths





Waves
search for the sphere or
circle



The fern is a wave in slow motion



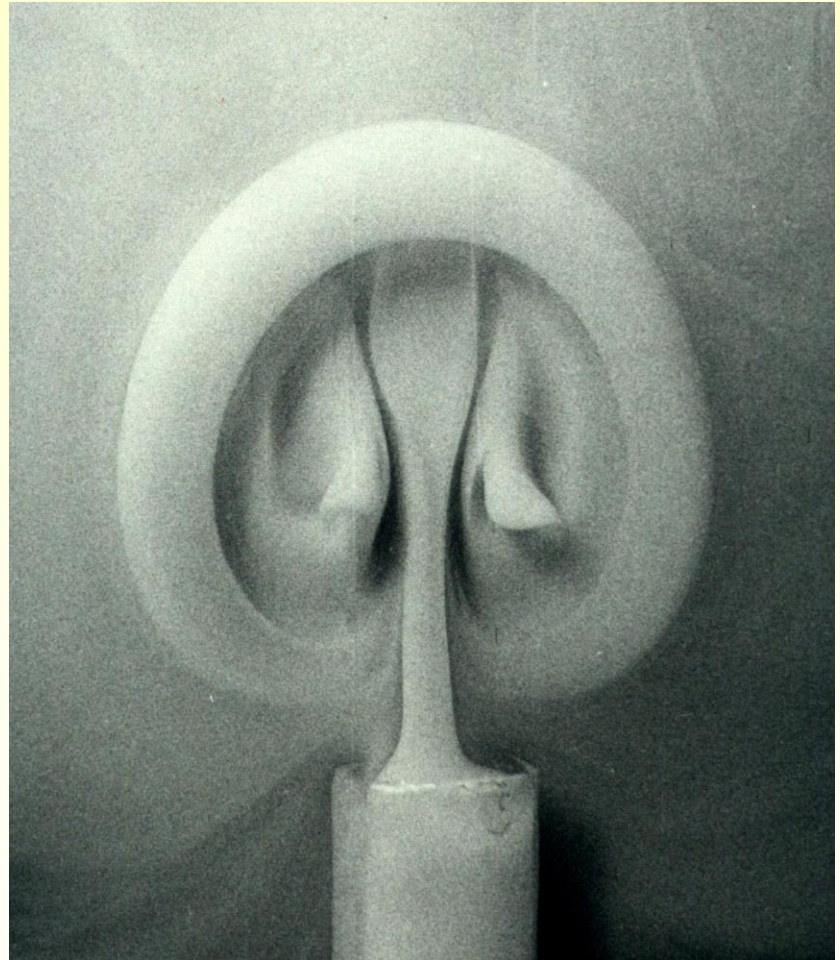
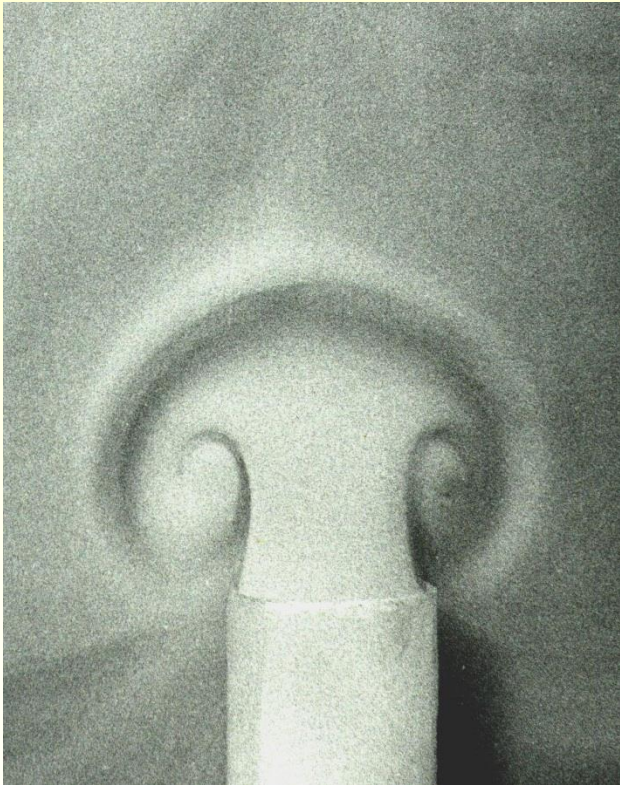


Rhythmic circles and
spirals in water

Above – experimental
Right – clouds over islands

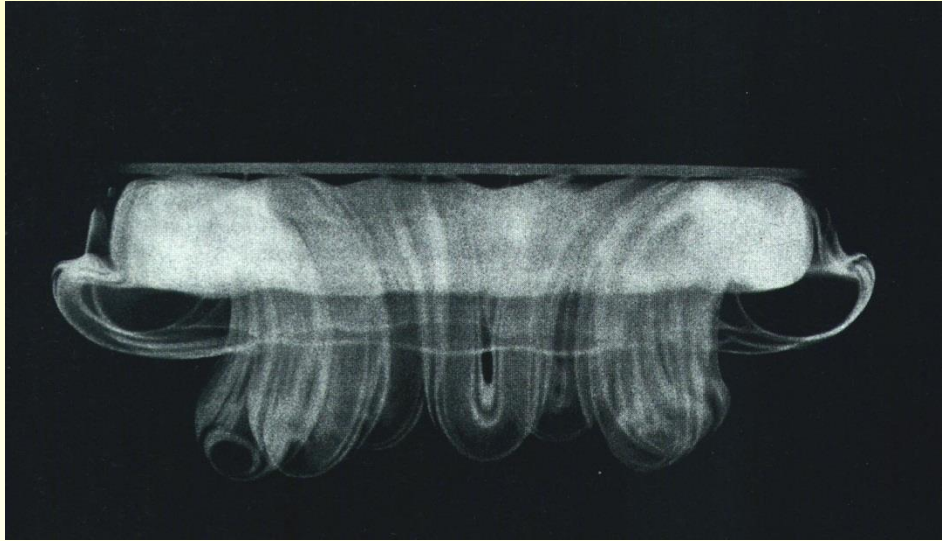


Forward movement upwards into still water

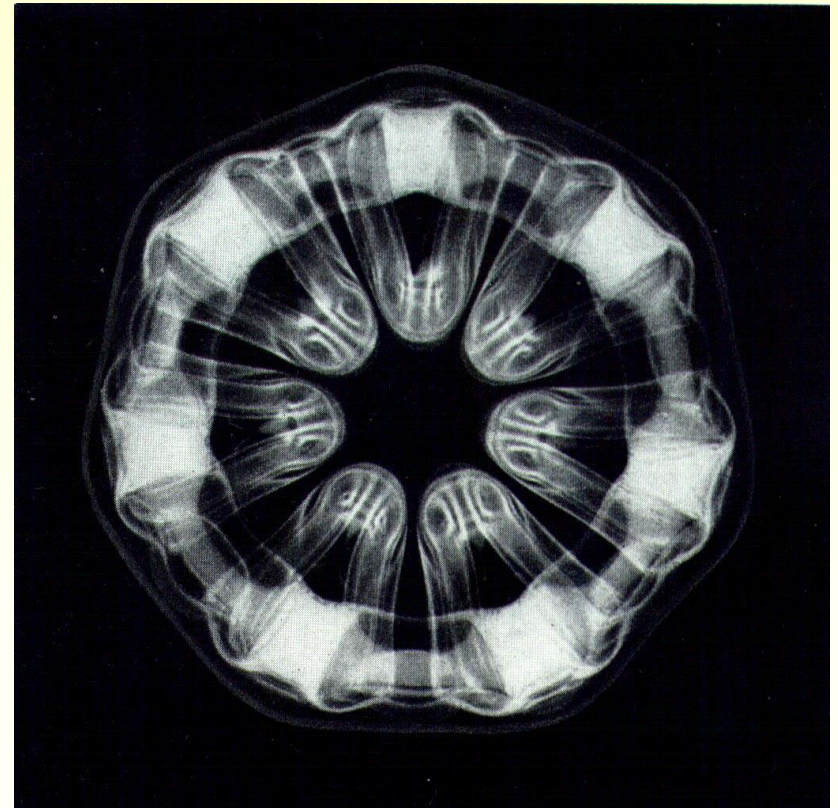




The same upwards moving water form photographed from the side and from above at the moment it touches the meniscus at the top of a beaker of water



These sensitive shapes are created through water's rhythmical response with movement through still water

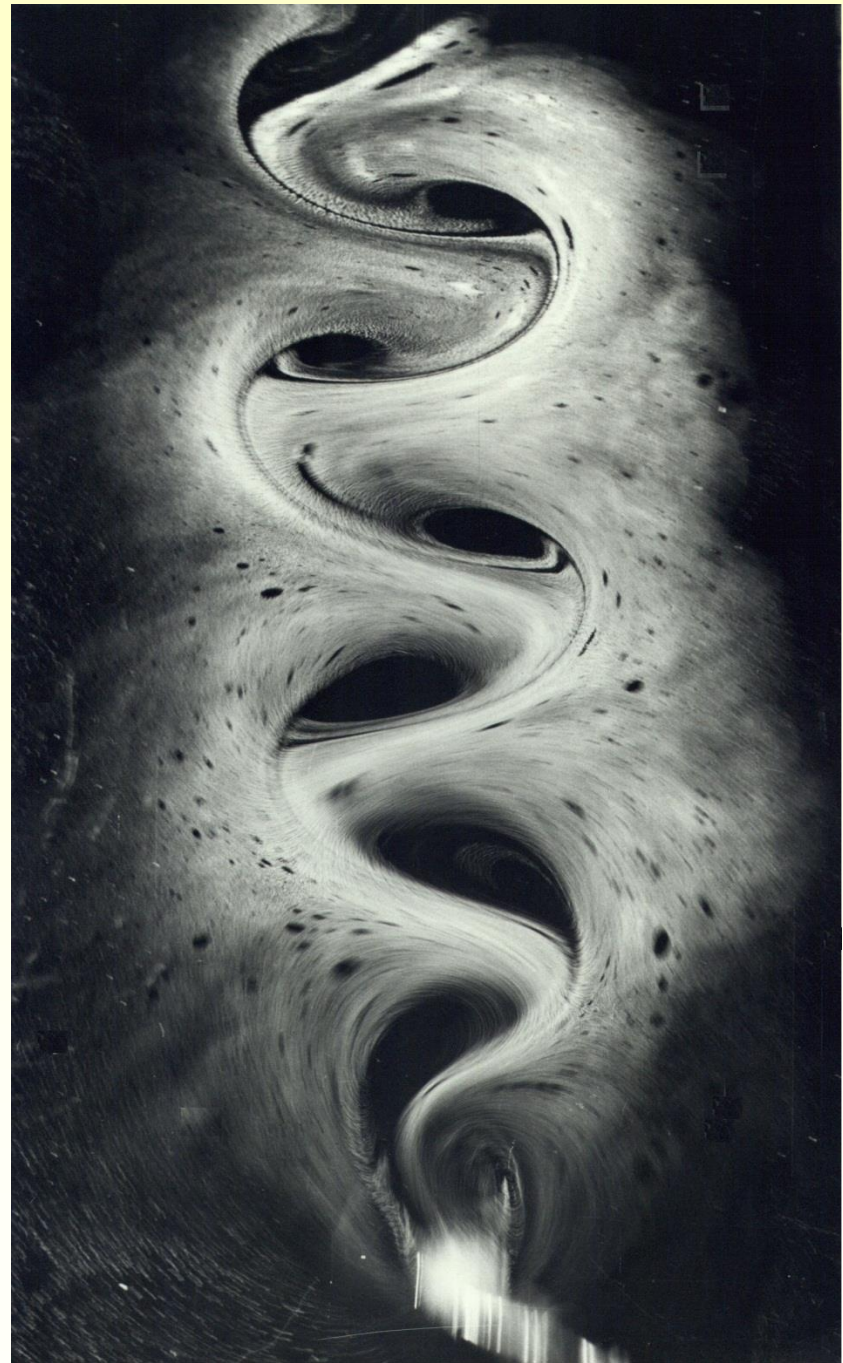




Jellyfish... 95% water



Experimental
'path of vortices'
and bones...
formed from
liquid movement





Split second
photo of
falling water
←





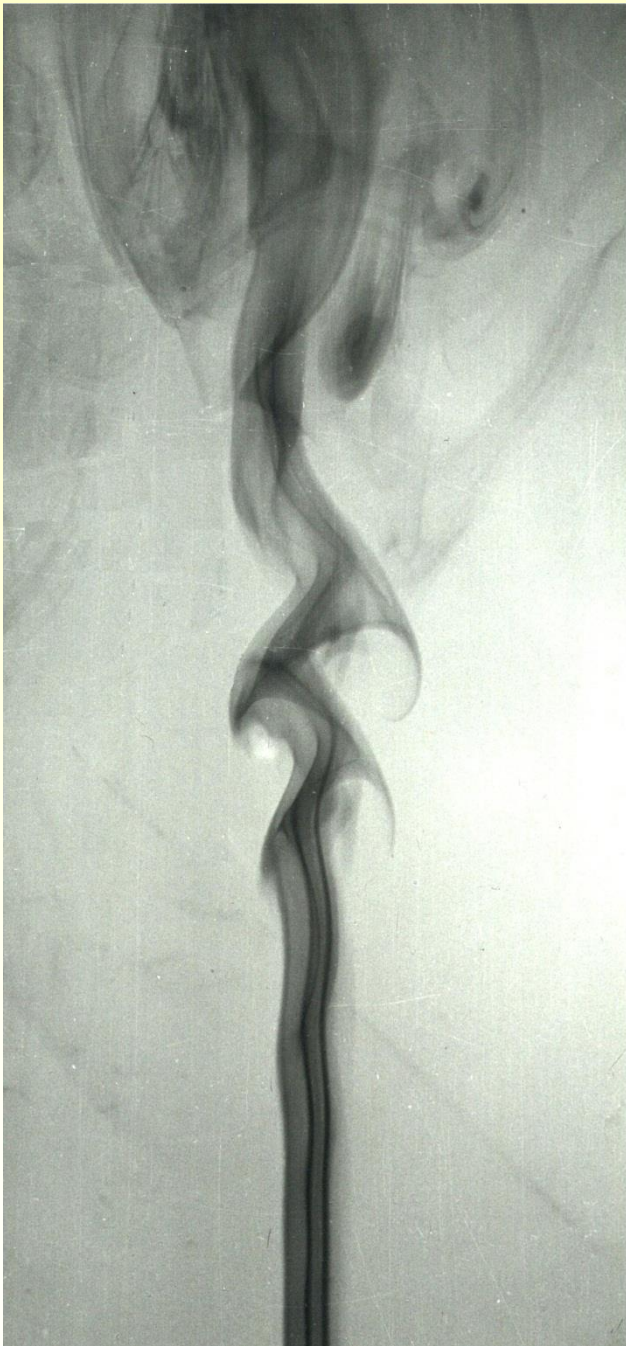
Embryology is water shaping

Through rhythms in water
all living forms are created

Rhythm in time expresses itself as pulse

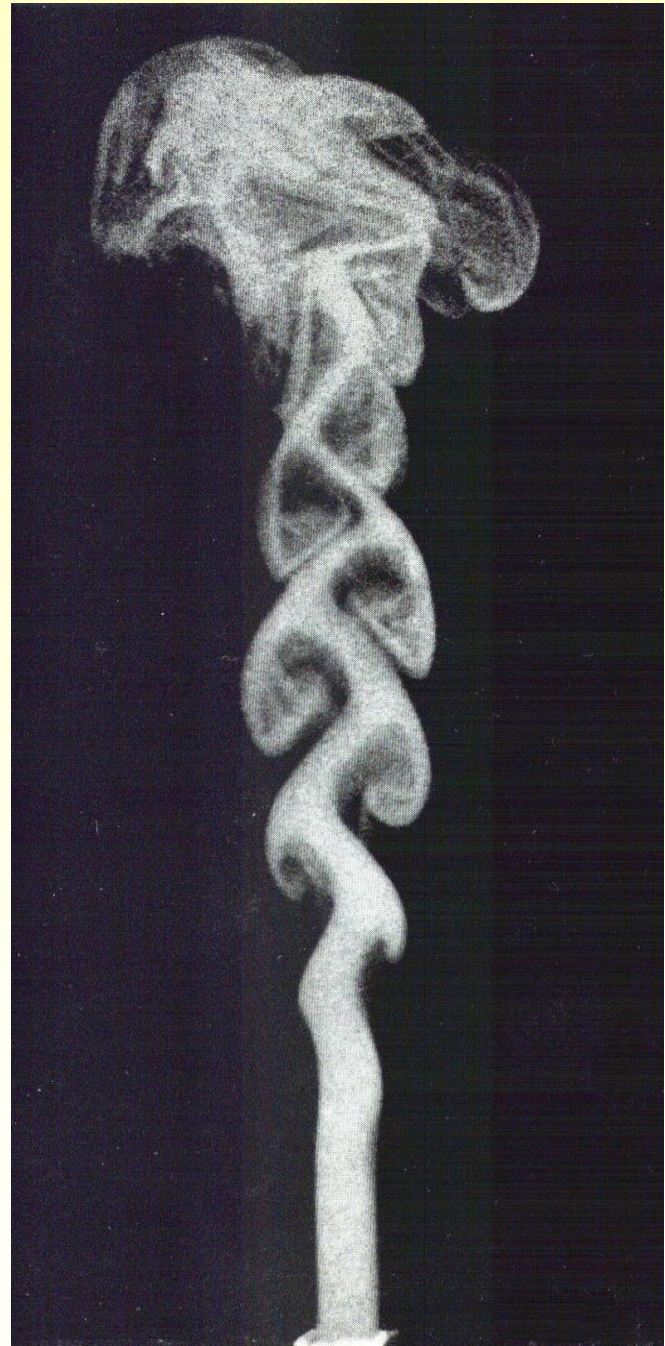
Rhythm in space creates symmetry

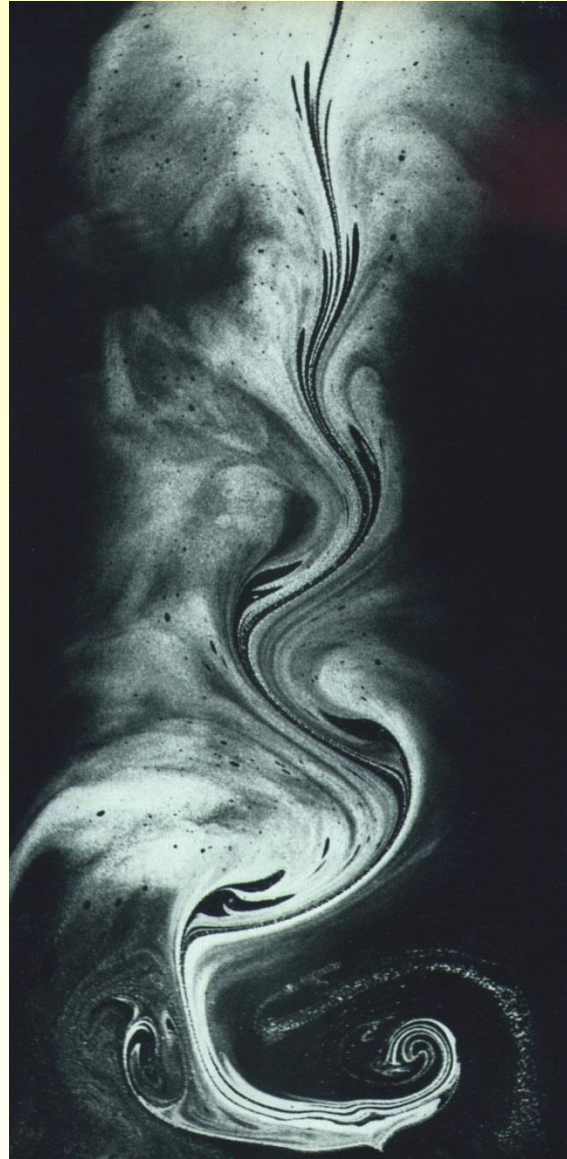
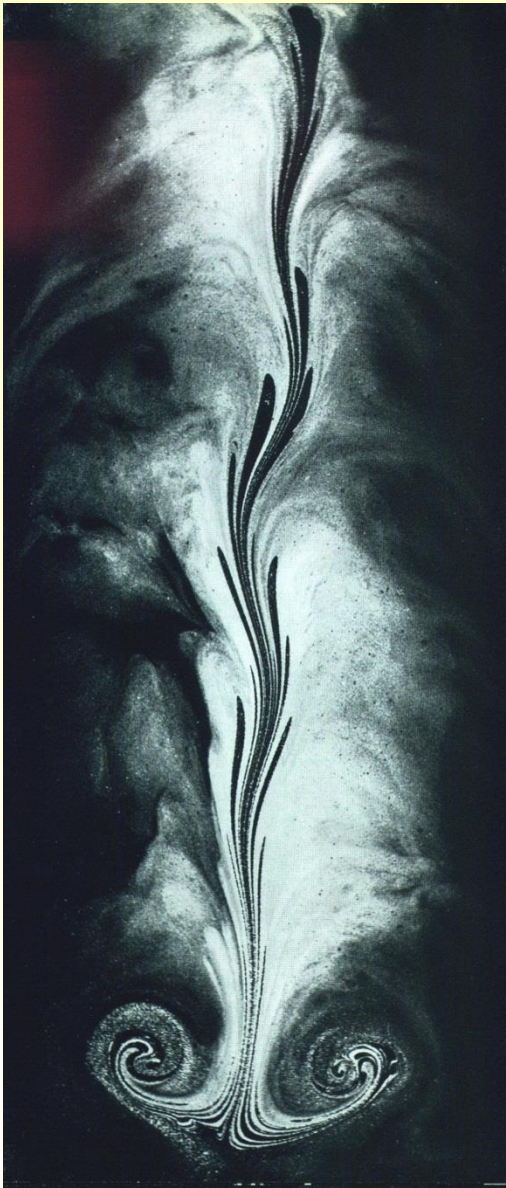




turbulent
-
harmonic
-
laminar.

Different
forms
appear
dependent
on the
balance
between
resistance
and thrust



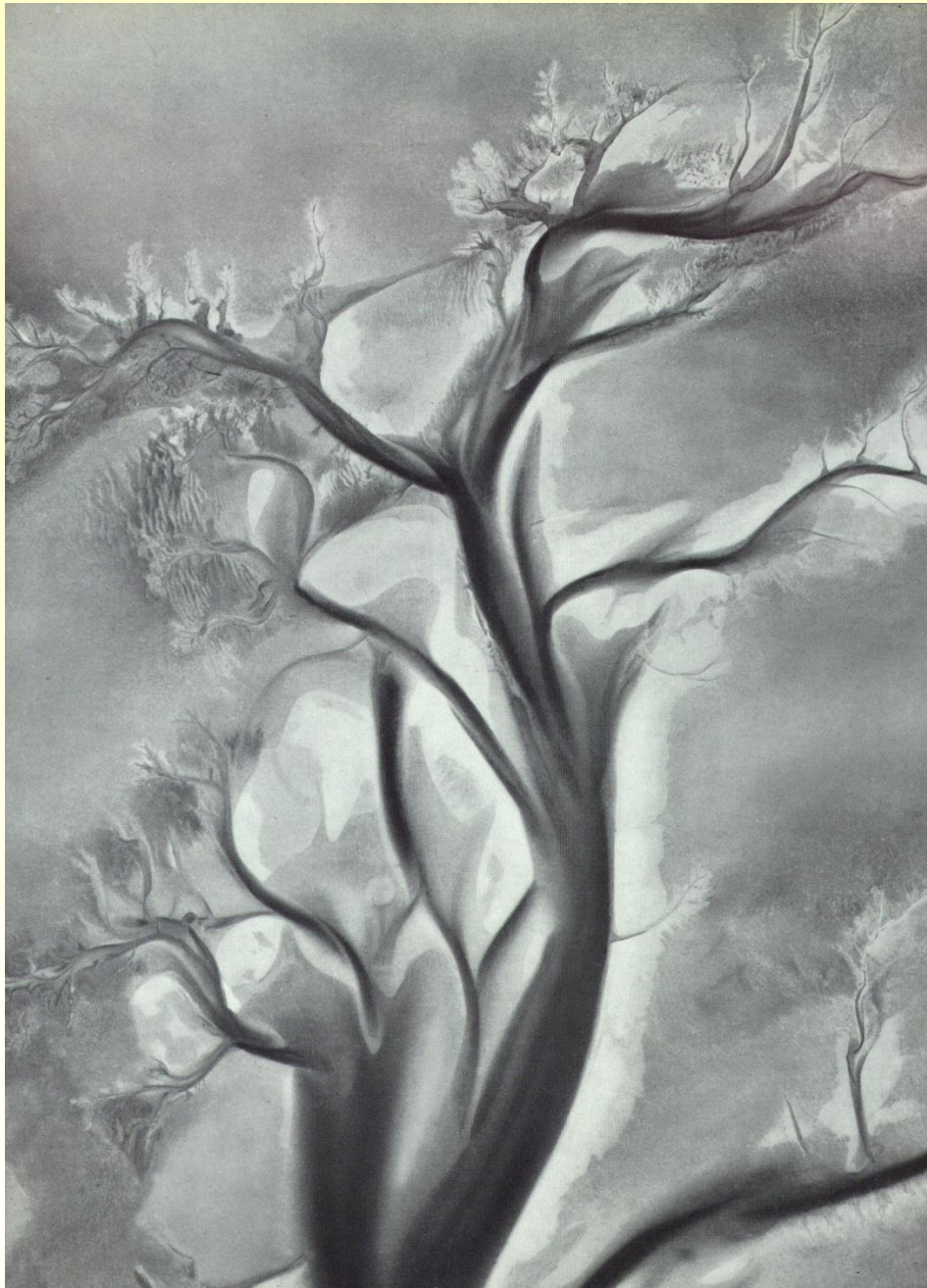


Dried plant
(with most of
roots missing)

Experimental plant formations both formed
by water flow in water, made visible



'Sensitive Chaos' Schwenk,
river delta from a high altitude.



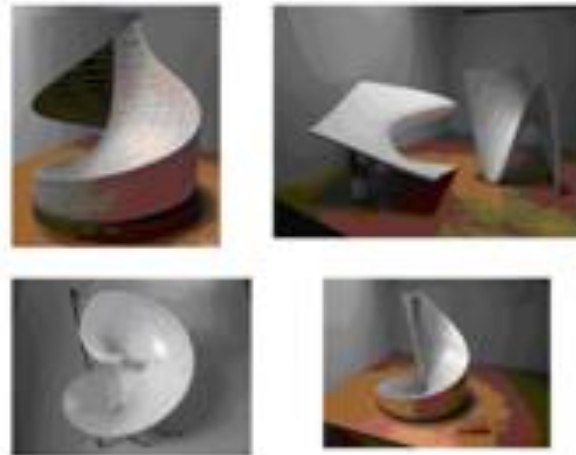
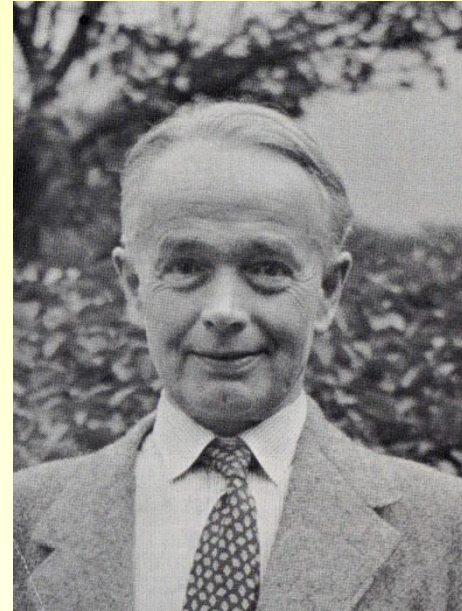
George Adams
1894 – 1963

John Wilkes' mentor
and colleague

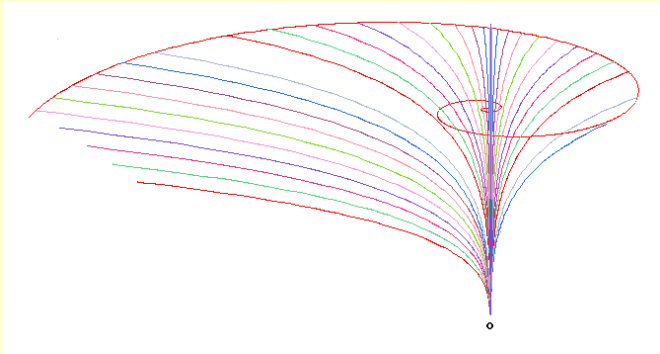
Cambridge chemist and
mathematician

Developer of mathematical
Path Curve
flow surface design

Biomimicry design
from the 1950s

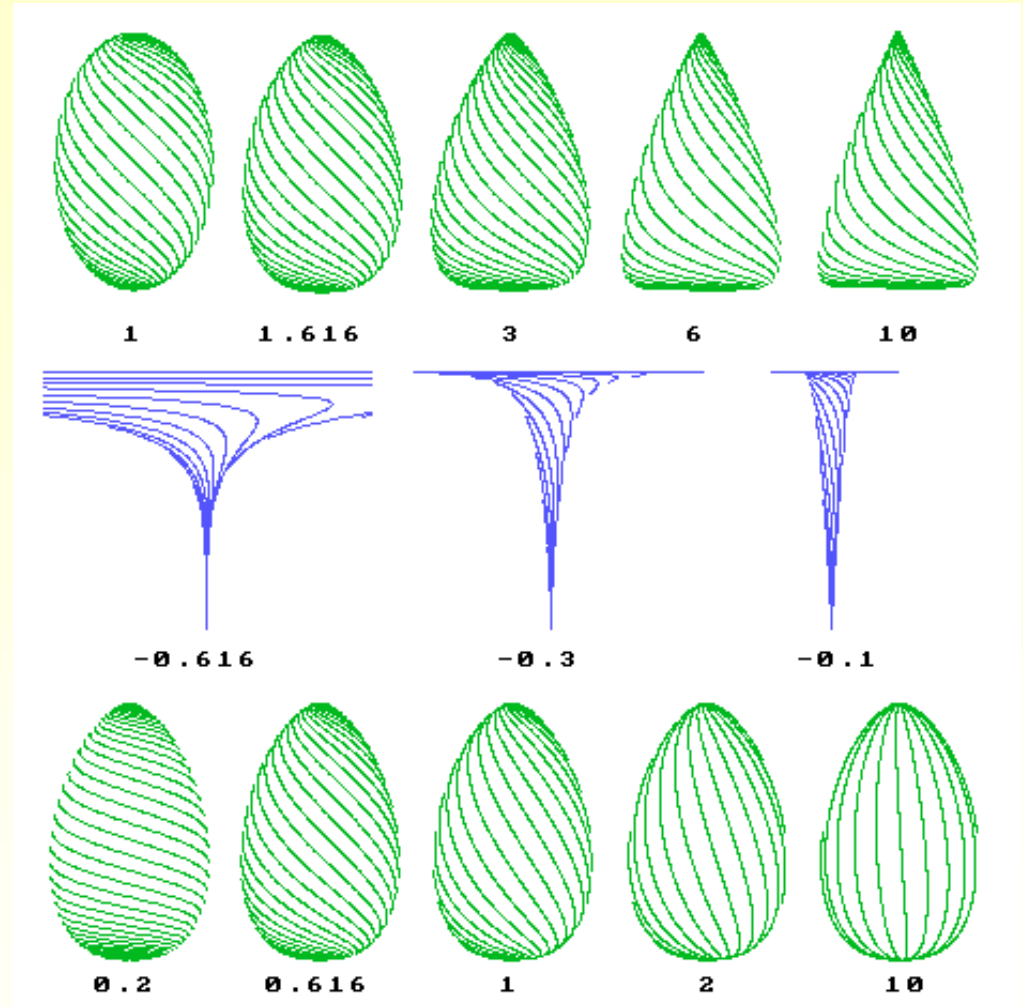


Path Curve mathematics – the geometry of formative process



The Vortex is made of path-curve surfaces, and acts as a vitally important water enlivening and refreshing method by nature.

Adams' work has been continued by Nick Thomas and Florin Secosan within Foundation for Water





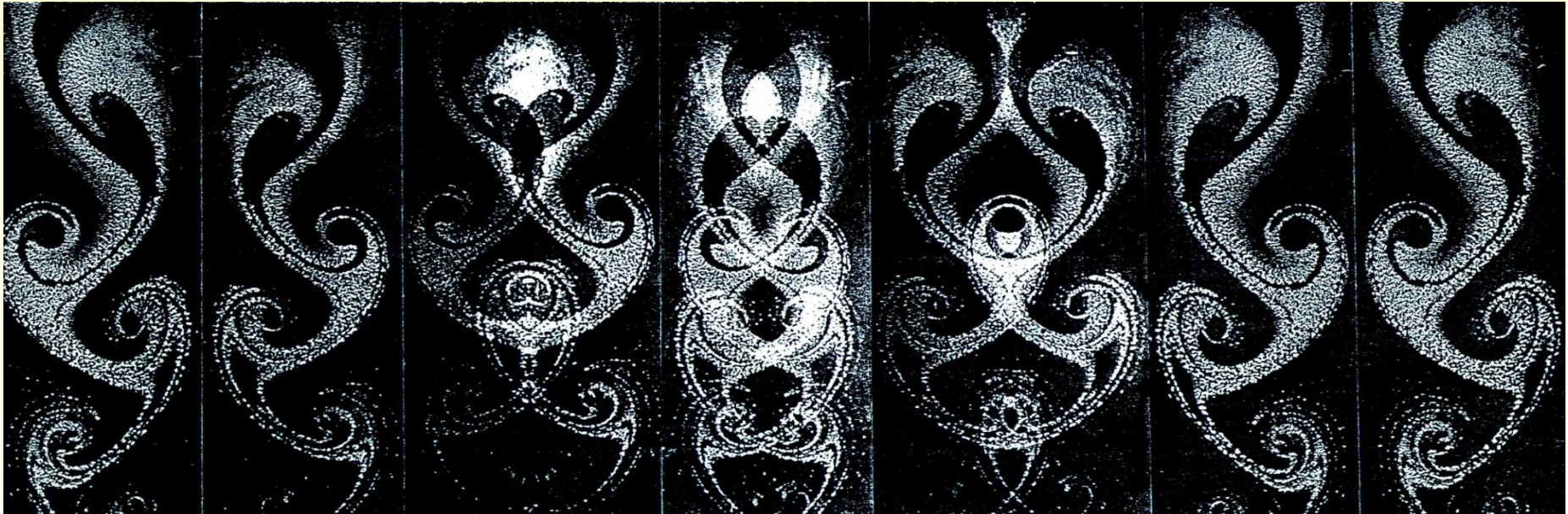
Complex mathematics is found within many forms in nature



The Flowform Principle

John Wilkes 1970

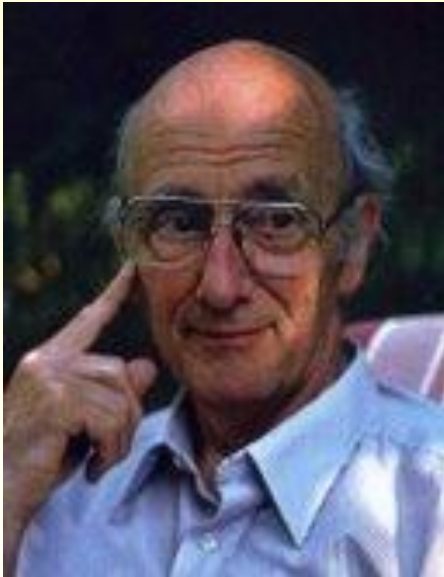
oscillating dynamic figure8 flow with a regular pulse



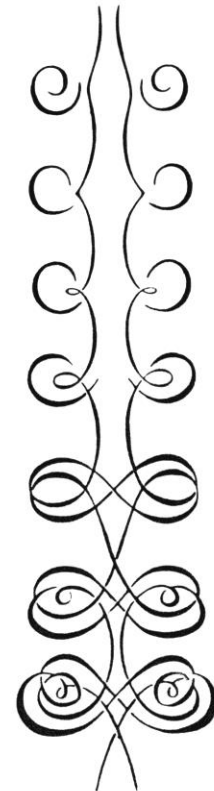
discovered after years of research
into the creative rhythmic power of water in living nature

**John Wilkes' Flowform invention: 1970 April
came from his question...**

“Would it be possible to create for water a vessel or ‘organ’
which would enable it to manifest its potential for order and
metamorphosis, as demonstrated in the Path of Vortices phenomenon?”



John Wilkes ARCA
1930 - 2011

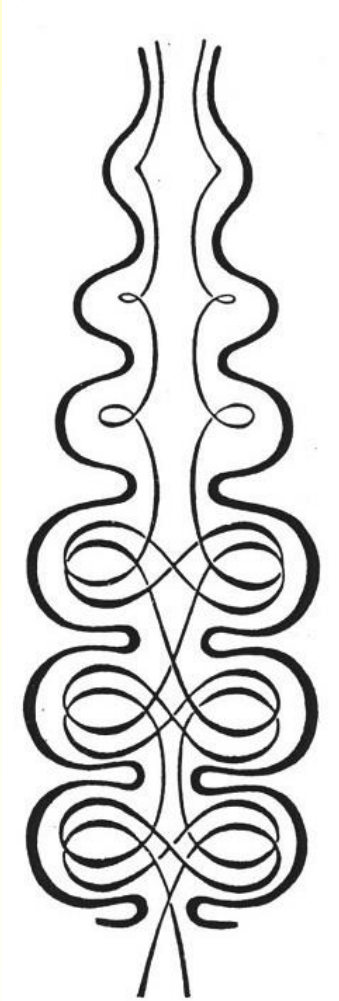


Flow Surface Design Technology

DYNAMIC FLOW OF WATER

bringing nature's revitalizing method
into the human-use water cycle

Flowform runs through a figure8 flow and
develops a natural pulsing outflow



Flowform ... technology from the heart of nature



Nature left to itself has
fabulous water quality

Vast amounts of water are taken
from nature for human use

Not moving freely it loses its quality

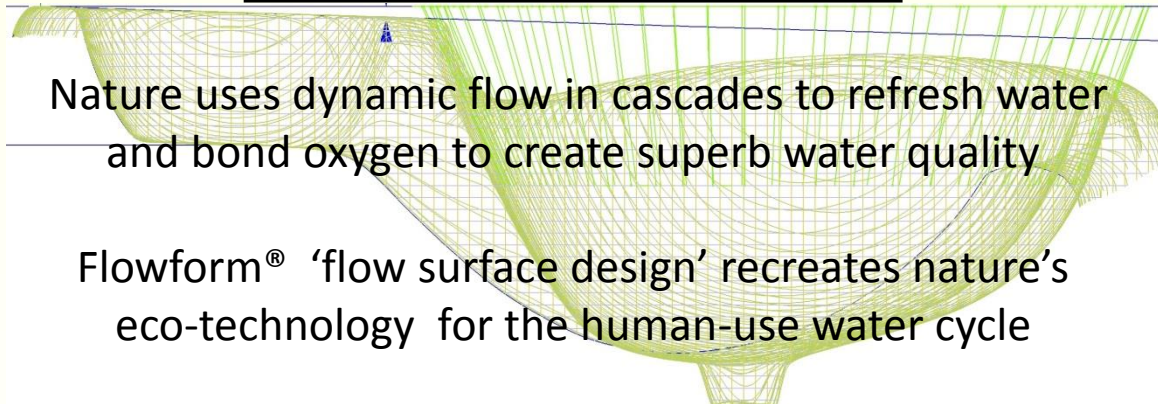
This poor quality water is used in
homes, farms and factories

The Answer:

APPLY NATURE'S DYNAMIC FLOW

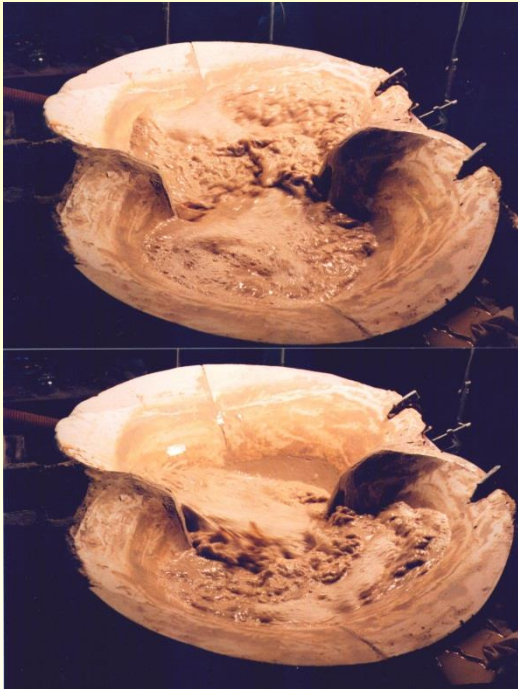
Nature uses dynamic flow in cascades to refresh water
and bond oxygen to create superb water quality

Flowform® 'flow surface design' recreates nature's
eco-technology for the human-use water cycle

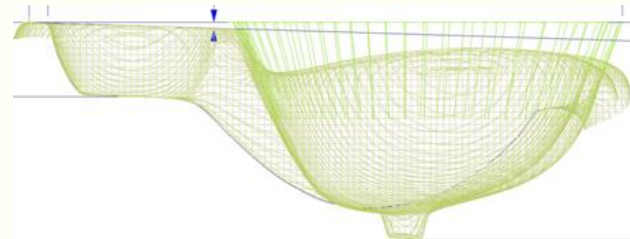
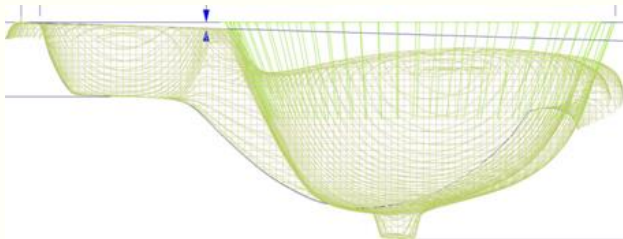


Flowform Design

using path-curve geometry



Flowform Prototype
for water treatment.



Some Flowform projects renewing water quality through figure8 dynamic flow



New Zealand
Lake Te Ko Utu

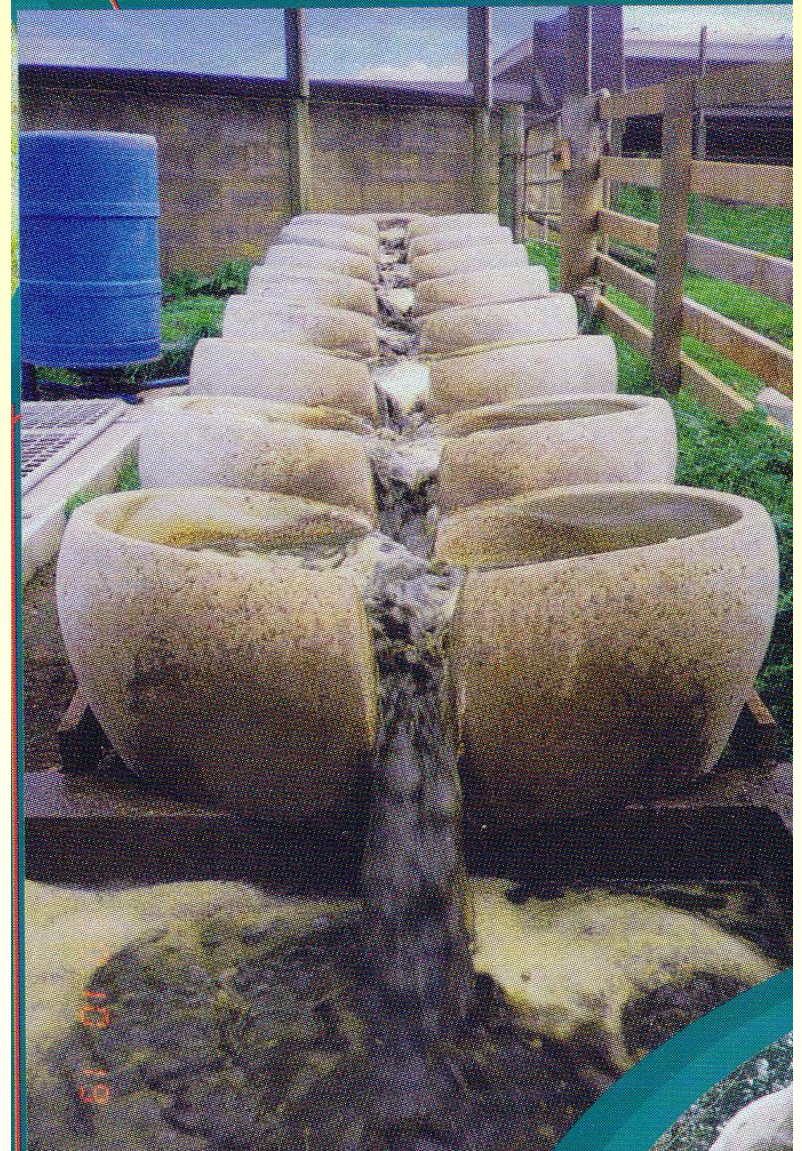
<=Before
After =>



Dairy Shed Effluent transformation



Design: John Wilkes and Nick Weidmann



Design: Iain Trousdell NZ

Case Study – dairy shed effluent into liquid fertiliser

Transforming million-litre smelly effluent waste ponds into valuable liquid fertiliser

Reference - Farmer Greg Hill, New Zealand

I own a 100 hectare dairy farm servicing 240 cows. Our large effluent pond used to crust up and was smelly and dark brown, prior to using Flowform. Now we have an aerobic semi-clear golden liquid that has a sweet smell, which I spray onto the paddocks as fertiliser. There is no resulting sludge and the cows are back on the nicely growing grass after only 2-3 days, instead of several weeks !



Peter Bacchus, Hauraki Plains, NZ

On the farm I manage we are increasing grass growth and production and animal health as a result of using Flowform. No other system in the world I know of can add so much for so little.

Design: John Wilkes
and team UK



BioSophia model

Flowform water treatment installation for the production of Demeter quality grain milk, using only Biodynamically grown grains. Norway

Artistic Flowform developments.

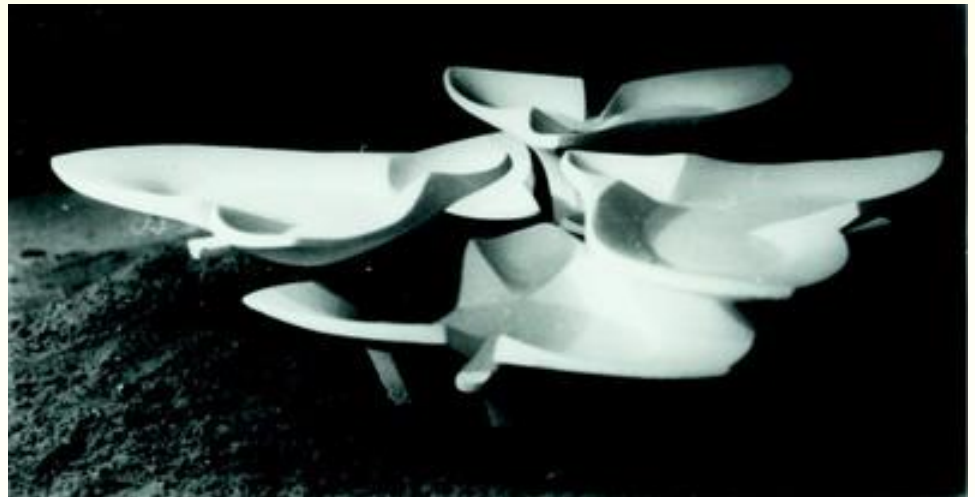
Holland and Sweden.



Design: John Wilkes and Nigel Wells UK



Design: Paul van Dijk
Holland



“The creator of the Flowform is a genius. He has brought into a beautiful shape all the main ideas of traditional Chinese wisdom and it is also healing for water, people and the environment.”

(Mr. P Hsu, May 2005 - Tai Chi adept & doctor, Taiwan)

“This is the closest thing to the Tao we will ever see”

(Taiwan Qigong Master James Yang speaking of figure8 rhythmic flow)

“How could this wonderful thing possibly come out of the West?”

(Traditional landscape designer, Japan)



FOUNDATION FOR WATER - renewing water's natural vitality

1. Research
2. Technology
3. Water Projects
4. Education



www.foundationforwater.org

Pixton Hill, Sussex, England



THANK YOU